

FORM FOLLOWS PARAMETER

COLLABORATION WITH COOP HIMMELBLAU, AUSTRIA

Keywords – Architectural aesthetics, Parametric thinking, Practical Imagination, Futuristic technologies

- Collaborating with industrial advice.

Faculties – Ar. Manali Deshmukh, Ar. Anurakti Yadav, Ar. Kanchan Shinde, Ar. Swati Vaidya, Professional Team - Karin M, Karolin S, Mathew Tam.

First technology workshop of its kind, where 80 young and creative minds researched and explored technology and materials for 6 days.

The institutional collaboration was with fourth year students of **SMEF's Brick School of Architecture, Pune and architectural firm Coop Himmelblau, Austria** at SMEF's Brick School of Architecture, Pune.

The collaborative initiative stands as a remarkable success, reflecting the synergy between academic knowledge and practical expertise within the architectural realm. This 6-day collaboration aimed to bridge the gap between imaginative design and pragmatic implementation, ultimately enhancing students' architectural prowess.

The primary objectives of the collaboration were:

Practical Imagination: To guide students in channeling their imaginative concepts into realizable architectural designs.

Hands-on Learning: To provide students with practical exposure to the architectural design and development process.

Technology Integration: To introduce students to advanced tools like AI and simulation software for enhancing design and structural decisions.

Mutual Learning: To foster a mutual learning environment where both faculty and students could benefit from each other's perspectives.

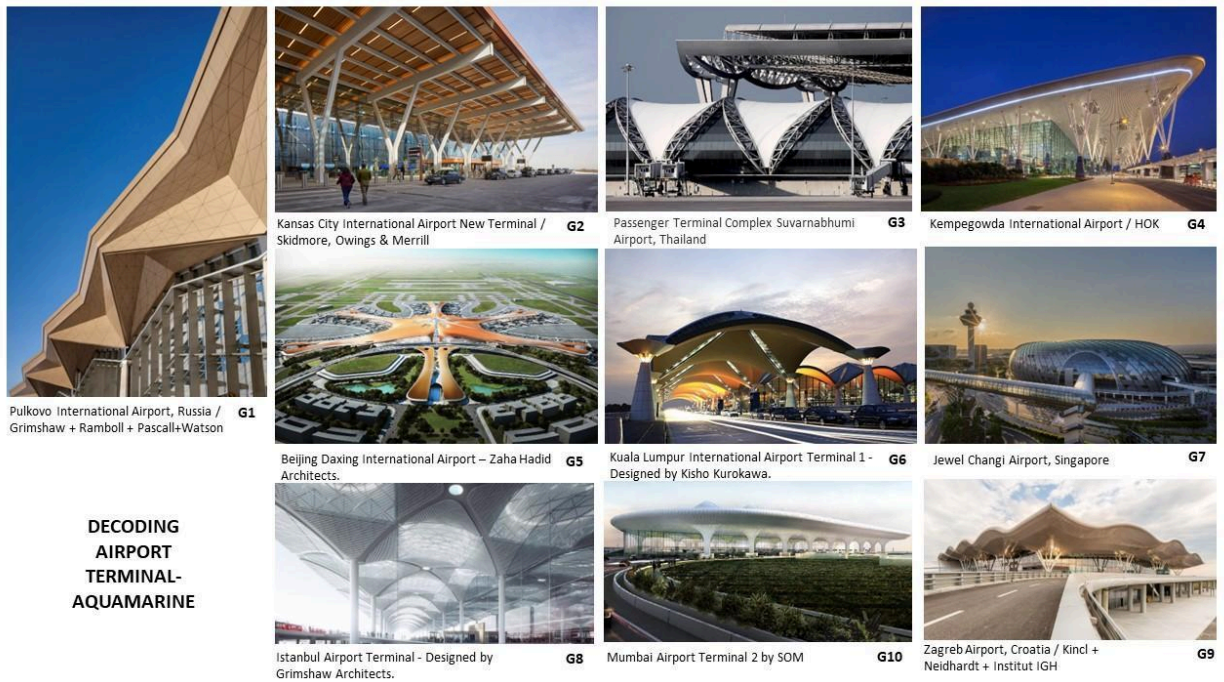
Collaborative Approach:

The collaboration unfolded through a series of interactive workshops and activities that engaged students and faculty members in diverse aspects of architectural design and execution.

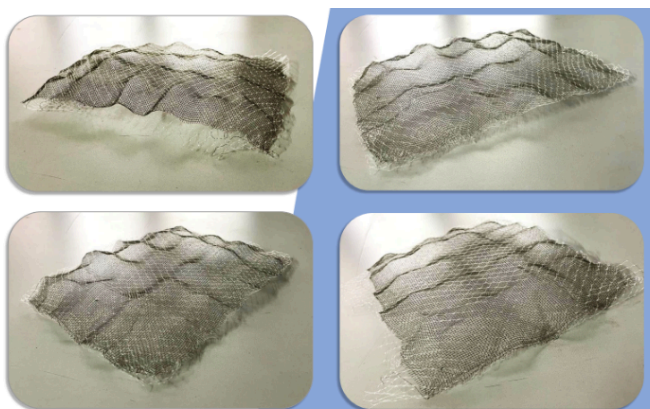
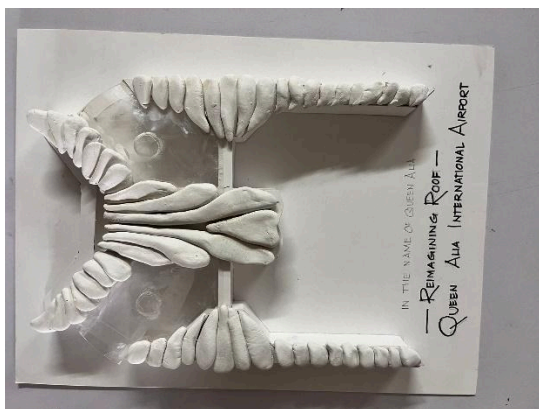
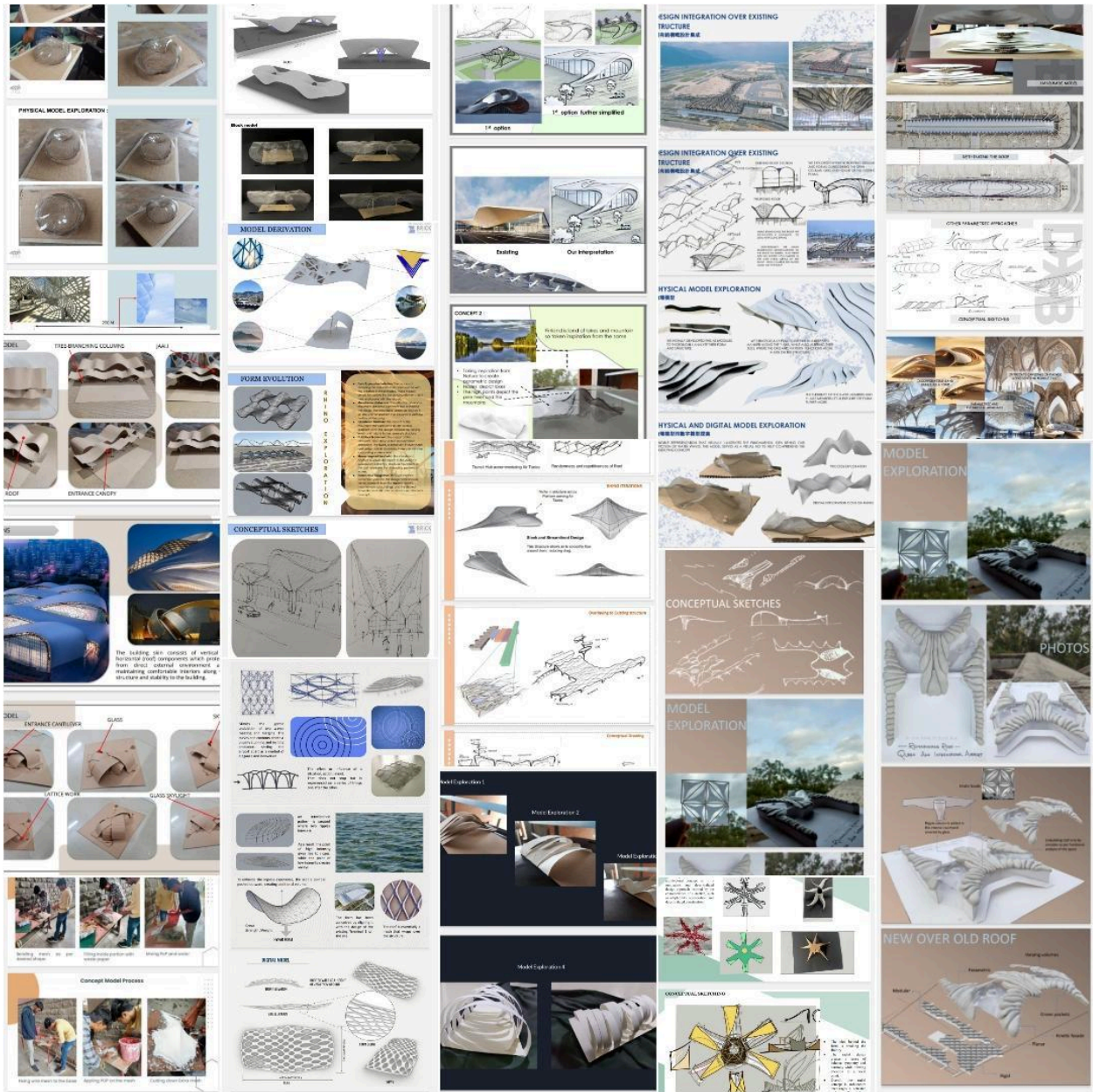
Workshop Highlights: Rethinking Terminal Roof Building for the Future:

The central workshop, titled "Rethinking Terminal Roof Building for the Future," was a pinnacle of collaborative efforts. Students, divided into groups of four, embarked on a transformative journey:

Decoding Existing Terminal Building: Students began by analyzing and understanding renowned terminal building designs, decoding the architectural concepts that underpinned them.



Parametric Design Exploration: Guided by the principles of parametric design, students developed innovative roof proposals using a mix of physical conceptual models, software simulations, and AI tools.



Structural System Integration: The proposed designs were subjected to thorough scrutiny, with students meticulously crafting structural systems that balanced aesthetics and functionality.

Material and Construction Refinement: Students culminated their designs by refining material selections and construction details, ensuring feasibility and sustainability.

Learning from Coop Himmelblau, Austria:

It played a pivotal role in inspiring and enlightening students through sharing their design practices. Students were exposed to the firm's systematic approach, which starts from basic sketches, evolves through physical models, and culminates in structural simulations. The firm's experts reviewed student work and offered insightful critiques, encouraging a growth-oriented mindset.

Student Benefits:

Students reaped substantial benefits from the collaboration. They had the privilege of observing a professional design process firsthand, which deepened their understanding of how theoretical concepts can be translated into tangible designs. The opportunity to interact with experts widened their horizons and nurtured their creativity.

Faculty Learning:

The faculty members from both the institute and the firm found themselves enriched by the exchange. The novel perspectives and fresh ideas brought by the students injected new energy into their teaching and practices.

Conclusion:

The collaborative endeavor between **Coophimmelblau, Austria** and **SMEF's Brick School of Architecture, Pune** has left an indelible mark on students, faculty, and the field of architecture itself. The success of this partnership is a testament to the potency of merging academic excellence with practical wisdom, and it stands as a guiding light for future collaborations in architectural education and practice.

